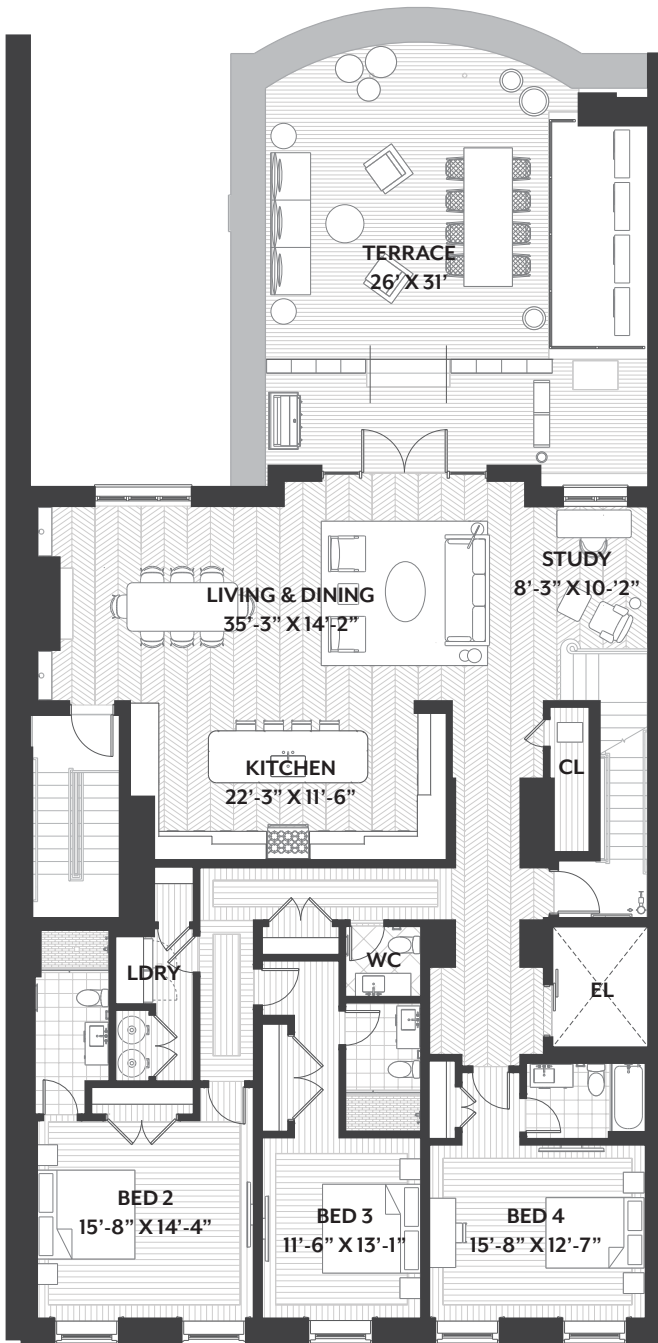


FLOOR PLAN

ESTD. 1925

MOORELAND HOUSE

397 COMMONWEALTH AVENUE



LEVEL ONE PH

1925
M

The Penthouse is a floor-through luxury condominium on the top two levels of Mooreland House. Each residence within the historic, early 20th century building is designed for contemporary luxury and style, with modern comfort and conveniences. State-of-the-art appliances and fixtures, oak floors, stone countertops, marble tile, and soaking tubs are some of the features of these extraordinary spaces. The Penthouse enjoys two outdoor living areas including a private terrace and an upper level deck. Private parking is accessed via the Marlborough Street entry, while the Commonwealth Avenue facade enjoys spacious views of the tree-lined mall.

4 **4F, 2H** **4,100**
BED **BATH** **SQ FT**

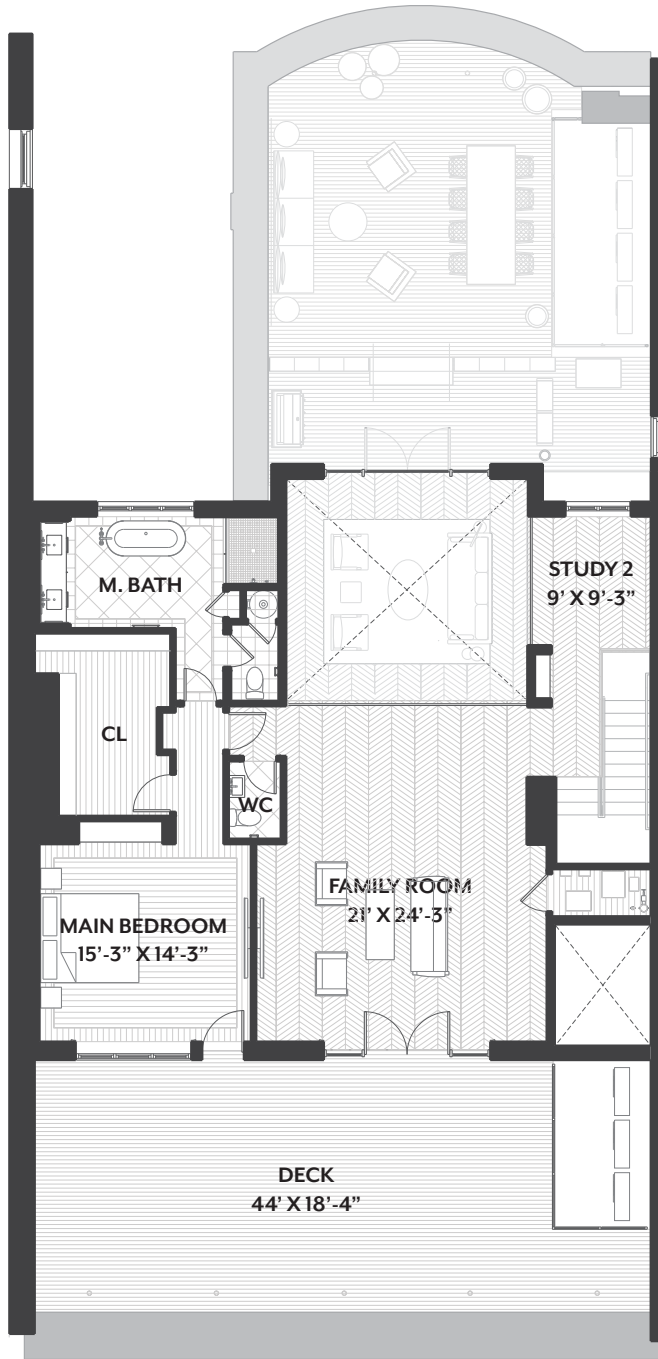


FLOOR PLAN

ESTD. 1925

MOORELAND HOUSE

397 COMMONWEALTH AVENUE



LEVEL TWO **PH**

1925
M

At the upper level of the Penthouse at Mooreland House, the additional roof deck overlooks the treetops of Commonwealth Avenue. Inside, a generous family room and a second study are open to the main living space below, with views across Marlborough Street. The main bedroom suite is tucked away from the other living spaces, and enjoys its own private access to the upper level outdoor space and distinct views of Back Bay.

4 **4F, 2H** **4,100**
BED **BATH** **SQ FT**

